

The Brown Pelican



The Newsletter of the Coastal Bend Audubon Society

On the Web at <http://www.ccbirding.com/cbas/>

President's Message

by David Newstead, CBAS President

Summer brings to mind the freedom to travel, relax, and spend time with friends and family. Taking a road trip and dipping a chip in pico de gallo have become sources of worry rather than joy for many people this summer, as gas prices reach \$4/gallon and the mystery of the salmonella scare dragged on. Nevertheless, these recent issues have not been without their positive side.

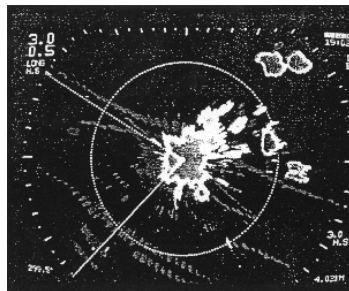
Gas prices have been rising for years, but never spiked so sharply as in the last 3 years. People began to discuss the implications for vehicles and travel. Would we start seeing more efficient vehicles on the road? Would people begin carpooling to work, using public transportation more? Of course, conservationists have been espousing these changes for years, as there are fundamental environmental reasons to try to use less (conserve), beyond the geopolitical reasons and the financial reasons that affect everyone's wallet. Those predictions were

(Continued on page 5)

September Speaker—Suzanne Contreras

Marine Radar and Bird Migration in Southern Texas

Suzanne Contreras will be speaking about using marine radar to track bird migrations. The Texas Gulf Coast provides important stopover habitat for millions of migratory birds annually. She initiated a three year study to examine the temporal and spatial patterns of bird migration along the lower Gulf Coast of Texas using avian radar systems to collect site-specific data on chronology, magnitude, and dispersion of bird migration. Data collection began at a study site in Kleberg County during Fall 2007. A second study site became operational in Cameron County during Fall 2008. The plan is to collect data on bird migration from Aug. 15 to Nov. 1, & from Mar. 15 to June 1. This baseline data on migration patterns will provide information to assist in the management and conservation of migratory birds.



*Brian A Cooper, from
"Use of Radar for Wind-power Related
Avian Research"*

North Bay Sanctuary Update

by David Newstead

Soon after the levees for the prairie wetland were completed in late March, San Patricio County was hit with a gully-washer of a storm, which filled the wetland to overflowing. When I visited in early April there were white-faced ibis, black-bellied whistling ducks, and various migrant shorebirds already using it. Then it seemed like it didn't rain again all spring and summer. Fortunately, the wetland held water throughout the entire drought period, and pairs of least grebes, mottled ducks, and black-necked stilts were present through the summer, probably breeding there. It still holds a good amount of water as of this writing, and has become a popular hangout for whistling-ducks in the area. Crayfish, frogs, and red-eared slider turtles have already been seen using the wetland, and we hope to see that wildlife diversity increase as the vegetation becomes better established.

This project, as well as the purchase of supplies and equipment for continuing our

(Continued on page 7)

CBAS Monthly Meetings

Tuesday, September 1 at 7 pm

Speaker: Suzanne Contreras, Caesar Kleberg Wildlife Research Institute, Texas A&M University-Kingsville

Topic: Using marine radar to assess bird migration in southern Texas

Location:

Corpus Christi Museum of Science and History
1900 N. Chaparral
Corpus Christi, Texas

Time:

1st Tuesday of the month at 7:00 p.m.

All members and the public are invited!

Monthly meetings are held on the first Tuesday of the month at 7:00 p.m.



**Earth Share
OF TEXAS**

**One environment.
One simple way
to care for it.**



WHAT'S UP AROUND TEXAS

HUMMER/BIRD CELEBRATION

September 11-14, 2008 Rockport

Speakers and programs, outdoor exhibits, a banding site, nature related vendor booths, Hummer Home visits, birding boat excursions, guided field trips highlight this annual festival along the Central Texas coast.

Contact: Rockport/Fulton Chamber of Commerce
404 Broadway, Rockport, TX 78382, (800) 242-0071

Web site: www.Rockport-Fulton.org

E-mail: visitor@rockport.org

XTREME HUMMINGBIRD XTRAVAGANZA

September 13, 2008 Lake Jackson

Hundreds of Ruby-throated Hummingbirds make the fall migratory journey along the Texas coast and across the Gulf. Witness this with other hummingbird enthusiasts and enjoy related activities.

Contact: Gulf Coast Bird Observatory, Lake Jackson, TX
(979) 480-0999

TEXAS PARKS & WILDLIFE EXPO

October 4-5, 2008 Austin

Presented by Texas Parks and Wildlife Department, Expo gives visitors an opportunity to learn about a wide range of outdoor sports and pastimes. The birding area offers information about birding in Texas. Whether you're an old hand or a new backyard birder, you'll love Expo's birding area.

Contact: Texas Parks & Wildlife Expo
4200 Smith School Road, Austin, TX 78744, (800) 792-1112

Web site: www.tpwd.state.tx.us/expo/

REFUGE WEEK

October 6-12, 2008 Your favorite national wildlife refuge

Visit your favorite national wildlife refuge this week to learn more about your local natural heritage and what is being done to protect the wildlife around us.

WIND FARM CASE

On the 4th of August, the Coastal Habitat Alliance (of which CBAS is a founding member) received notice that the case against the developers of major industrial wind projects in Kenedy County had been dismissed. As of the time of this writing, the judge had not yet issued his written opinion. Once the judge has issued the written opinion, CHA's lawyers will determine if there are grounds to appeal. The case has been a success in terms of bringing the issue of wildlife impacts to the debate about wind energy development on the Texas coast. It is an issue that will be affecting the coast, migratory wildlife, and that debate for many years to come.

13th ANNUAL TEXAS BUTTERFLY FESTIVAL

October 16-19, 2008 Mission

Join us in Mission, Texas as we celebrate the Valley's 280+ species of butterflies. Learn from internationally renowned speakers, explore the area's natural habitats on expert guided field trips. Other activities include the Butterfly Bonanza South Texas BBQ Dinner and the Nature and Butterfly Expo.

Contact: Greater Mission Chamber of Commerce
(800) 580-2700

Web site: www.texasbutterfly.com

WILD IN WILLACY BOOTFEST

October 23-26, 2008 Raymondville & Port Mansfield

A four-day festival celebrating the natural bio-diversity of Willacy County, Texas, one of the four counties which make up the Rio Grande Valley. Birding field trips include airboat rides into the otherwise inaccessibly sloughs of the Laguna Madre Bay, boating safari across the Laguna Madre to the northern tip of South Padre Island and access to private ranches. Special two-day free children's program featuring participation by USFWS, Gladys Porter Zoo and others. Other events feature butterflies, native Texas plants and history of the area.

Contact: Raymondville Chamber of Commerce
(888) 603-6994

Web site: www.wildinwillacy.com

E-mail: chamber@granderiver.net

15th ANNUAL RIO GRANDE VALLEY BIRDING FESTIVAL

November 5-9, 2008 Harlingen

Celebrate the wonder that is South Texas. This festival will focus on field trips, a trade show and special presentations by internationally renowned birders and authors of wildlife biology. Field trips offer glimpses of parrots, Chachalaca, Great Kiskadee, Altamira Oriole and Green Jay among many other birds found in this region.

Contact: Harlingen Chamber of Commerce
311 East Tyler, Harlingen, TX 78550
(800) 531-7346, (956) 423-5440

Web site: www.rgvbirdfest.com

SOUTH TEXAS WILDLIFE AND BIRDING FESTIVAL

November 20-23, 2008 Kingsville

The festival will include workshops and seminars, birding tours, vendors and exhibitors.

Contact: Kingsville Convention and Visitors Bureau
1501 N. Highway 77, Kingsville, TX 78363
(800) 333-5032

Web site: www.kingsvilletexas.com

PLASTIC BAG PROBLEMS

Between 500 billion and a trillion plastic bags are consumed worldwide each year (from the National Geographic News September 2, 2003).

»Less than 1% of bags are recycled. It costs more to recycle a bag than to produce a new one.(Christian Science Monitor News Paper).

»Plastic bags photodegrade: Over time they break down into smaller, more toxic petro-polymers which eventually contaminate soils and waterways (CNN.com/tecnology November 16, 2007).

»Nearly 200 different species of sea life including whales, dolphins, seals and turtles die due to plastic bags.(World Wildlife Fund Report 2005).

»If you use a cloth bag, you'll save 6 plastic bags a week That's 24 bags a month. That's 288 bags a year. That's 22,176 bags in an average life time. If just **1 out of 5** people in our country did this we would save 1,330,560,000,000 bags over our life time (I think that's one Trillion).

»Plastic shopping bags are made from polyethylene: a thermoplastic made from oil. Reducing plastic bags will decrease foreign oil dependency (CNN.com/tecnology November 16, 2007).

» Israel, Canada, western India, Botswana, Kenya, Tanzania, South Africa, Taiwan, and Singapore have also banned or are moving toward banning the plastic bag. Ireland took the lead in Europe, taxing plastic bags in 2002 and have now reduced plastic bag consumption by 90%. China has banned free plastic bags. Bangladesh has banned plastic bags. San Francisco's ban on plastic bags was instituted last year, and Los Angeles is currently debating a similar measure.

»One recent [study](#) found that the inks and colorants used on some bags contain lead, a toxin. Every year, Americans throw away some 100 billion plastic bags after they've been used to transport a prescription home from the drugstore or a quart of milk from the grocery store. It's equivalent to dumping nearly 12 million barrels of oil (Salon.com, By Katharine Mieszkowski. Aug 10, 2007. Accessed on 8/16/08 from http://www.salon.com/news/feature/2007/08/10/plastic_bags/).

»For more information on the San Francisco ban, see San Francisco Plastic Bag Ban Interests Other Cities, by David Gorn , NPR. Accessed from: <http://www.npr.org/templates/story/story.php?storyId=89135360>. Accessed on Aug. 16, 2008.

EMAIL NOTICES

Don't delete that email!

Beginning in October Linda Fuiman is passing the email baton to Cherie McCullouch, CBAS Secretary. Cherie will be the name to expect on your email correspondence to announce upcoming presentations. Linda is still involved with CBAS but she is just concentrating more on educational programs.

PLASTIC BAG SOLUTIONS

CBAS can recommend two excellent substitutions for plastic bags given out at every store. Two styles are available in very sturdy canvas fabric with wide gussets. One is solid beige (13" x 15.5" x 7"), while the other features forest green straps and bottom with an outside pocket (dimensions 14" x 14.5" x 5.5"). Both are adorned with the CBAS brown pelican logo. Both are perfect for birding, toting stuff to the beach, or saving bags at the grocery store.

One bag costs \$10, two bags for \$19, three bags for \$27, and each additional bag is \$8 after that. Add \$5.00 for mailing.

To order contact David Newstead at 885-6203 or davnewst@yahoo.com

Checks should be made payable to:
Coastal Bend Audubon Society, P.O. Box 3604, CC TX 78463

Brown Pelican Shopping Bag



Big Day 2009

Make your plans now to attend the CBAS 2009 "Big Day"

When: Saturday, February 7, 2009

Where: Portobello's Restaurant
430 S. Padre Island Drive

This is a team birdwatching contest with 2 goals:
have fun & raise funds.

For \$25, everyone gets a T-Shirt & Dinner plus a great time birding.

Start organizing your team & look for more info in future newsletters.

For more information and to volunteer, contact CBAS Vice President, Mary Ellen Vega at txvega@aol.com.

CBAS FIELD TRIPS 2008-2009

Date	Location	Leader	Reservation/Fee	Additional Info
Saturday 10/18/08	Lake Whitney and CBAS North Bay Sanctuary	Dick Dubois, Sanctuary Man- ager	RESERVATIONS RE- QUIRED, NO FEE. Minimum 6 / maximum 16 participants; deadline for res- ervations 10/10/08.	Group will start at H.E.B. Ingle- side, no later than 6:45 am; group will caravan from H.E.B., to Lake Whitney. Equipment suggested: iPod with rail calls.
Friday 12/12/08 through Sunday 12/14/08	Birds of the Upper Rio Grande Valley	Gene Blacklock	REGISTRATION FEE RE- QUIRED: \$125.00 per person includes a \$25.00 donation to Coastal Bend Audubon Soci- ety. Deadline for reservations November 23, 2008.	Minimum 6 / maximum 12 partici- pants; participants are required to provide their own transportation, accommodations, meals, drinks and entrance fees.
Saturday 1/17/09	Lonesome Dove Ranch (privately owned), near Old San Patricio, San Patricio County. <i>Palmetto and riparian woodlands along the Lower Nueces River.</i>	Gene Blacklock and Mary Kay Skoruppa (USGS)	REGISTRATION RE- QUIRED: NO FEE. Deadline for reservations January 1; send reservations to Gene W. Blacklock, geneb@cbbep.org or phone: 885 6247.	Minimum 10 / maximum 15 partici- pants. Group will meet at Catholic Church, the only church in town, at 7:00 am; group will caravan to the ranch. * <i>This date and details are TENTATIVE pend- ing further coordination with land- owner.</i>
Saturday 3/7/09	Potluck lunch at the Nueces Delta Preserve (formerly McGregor Ranch). <i>Wintering birds in wetlands, prairies and thornscrub.</i>	CBAS hosting	NO FEE, invitation extended to Audubon Outdoor Club, Kingsville Bird & Wildlife Club, Aransas Bird & Nature Club.	From Corpus, Hwy 77 north past IH-37, the ranch gate is up the hill immediately past Katz Rock Yard. Meet at 7:00 a.m., <i>bring a covered dish or snack for a get-together under the pavilion after the birding.</i>
Thursday 4/16/09 through Sunday 4/19/09	Big Thicket – Jones and Huntsville State Parks, Silsbee, Anahuac National Wildlife Refuge and High Island. Also, Conroe, Winnie, Beaumont.	Gene Blacklock	REGISTRATION FEE RE- QUIRED: \$260.00 per person includes a \$25.00 donation to Coastal Bend Audubon Soci- ety. Deadline for reservations April 1. Mail registration fee to Gene W. Blacklock, 107 County Road 391, Mathis, TX 78368-3208.	Minimum 6 / maximum 12 partici- pants; participants are required to provide their own transportation, accommodations, meals, drinks and entrance fees. Trip starts at Jones State Park 6:45 a.m. on Fri- day.
Sunday 5/3/09	Migrant Hot Spots, Mustang Island	Linda Fuiman	REGISTRATION IS REQUIRED; NO FEE.	Minimum 6 / maximum 12 partici- pants; deadline May. Trip starts at Paradise Pond, 7:00 am; Birding Center, shorebird sites and North Jetty, Port Aransas.
Friday 5/29/09 through Friday 6/19/09	ALASKA	Gene Blacklock	Details to be announced.	Anchorage; Saint Lawrence Island; Nome; Barrow; Seward Peninsula (Seward and Homer); sites near Denali National Park.

CBAS FIELD TRIPS 2008-2009

FIELD TRIP LEADERS.....

Leader	Affiliation	Contact Info	Email
Dick Dubois	CBAS Sanctuary Manager	Phone: 361-549-2238	papadubois@yahoo.com
Gene W. Blacklock	Co-author: Birds of Texas, Field Guide, Texas A&M Press, 1994 and Birds of the Texas Coastal Bend, A&M University Press, 1985	Mail registration to: Gene W. Blacklock, 107 County Road 391, Mathis, Texas 78368-3208	geneb@cbbep.org
Mary Kay Skoruppa	US Geological Survey		
Linda Fuiman	Educator and Naturalist, University of Texas, Marine Science Institute, Port Aransas, Texas	Phone: 361 728 4635	Linda.fuiman@mail.utexas.edu

....AND BIRDS OF SPECIAL INTEREST

Overnight trips	Birding Sites	Birds of Special Interest
Birds of the Upper Rio Grande Valley	Bentsen Rio Grande State Park, Santa Ana National Wildlife Refuge and Birding Center. Headquarters: La Quinta, McAllen, 956-687-1101. Dbl. occupancy for two nights \$117.50.	Least grebe, masked duck (rare), Hook-billed (rare) and white-tailed kites, Chachalaca, jacana (rare), red-billed pigeon (rare), white-tipped dove, green parakeet (local), red-crowned parrot (rare), groove-billed ani, pauraque, buff-bellied hummingbird, green and ringed kingfishers, Couch's kingbird, Great Kiskadee, Northern beardless-tyrannulet, green and brown jay (rare and local), clay-colored robin, long-billed thrasher, tropical Parula (rare), Altamira oriole and olive sparrow.
Big Thicket	Headquarters Thursday night, April 16: La Quinta Inn Suites, Conroe (409-246-3580). Headquarters for Friday night, April 17: Super 8, Kountze (409-246-3580); Headquarters for night of April 18: Travel Lodge, Beaumont (800-578-7878 / 409-842-4420).	Yellow-crowned night heron, wood duck, swallow-tailed kite (rare), rails, purple gallinule, pileated, red-bellied, red-headed, Hairy (rare), downy, red-cockaded woodpeckers; great-crested flycatcher, blue jay, common and fish crows; tufted titmouse, white-breasted and brown-headed nuthatches; brown thrasher, yellow-throated and red-eyed vireos (breeding), Swainson's, pine, prairie warblers and northern parula (breeding); summer tanager (breeding), Bachman's and song sparrows (breeding); various Neo-tropical migrants.

PRESIDENT'S MESSAGE, CONT.

(con't from page 1)

slow to be realized, but there are now clear indications that minds are changing—higher sales of more efficient vehicles, more bikes & mopeds on the roads, and people are actually driving less.

The salmonella scare showed just how convoluted our food distribution system is, & how difficult it is to trace the source. This may be a reason for the increasing popularity of the Corpus Christi Southside Farmers Market. Buying locally grown produce helps conserve resources by minimizing transportation-associated emissions—and the fresher the produce, the better it is for you. Jaime Bustos, the organizer of the market, reports they have been seeing major increases in people at the market. Starting at 9:00 am every Saturday at the Everhart Market Shopping Center (5800 Everhart) until everything's gone—which is pretty quick thanks to the bustling business.

And how many times have you been driving down the road, slammed on your brakes to look at what you thought was a snowy egret, only to find that it was a plastic shopping bag? Now I'm seeing more reusable shopping bags at the grocery store, & HEB is having prize giveaways for customers who bring their own bags.

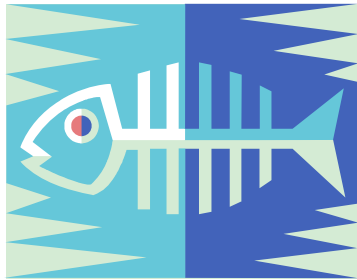
I'm certainly not "happy" about high gas prices, but I think that it is positive that most people seem to be taking a harder look at their driving habits. And hopefully some of these other changes which appear to be beneficial for resource conservation will become ingrained in habit. I hope it's not limiting your activities – the heat's almost over, and a new year is beginning for your Coastal Bend Audubon chapter. We hope to see you often at our programs and field trips.

ENVIRONMENTALLY FRIENDLY EATING

By Scott Large, Conservation Chair

SEAFOOD

Recently, popular media, the medical community, and its undeniably delicious taste has skyrocketed the popularity of all types of seafood. A quick visit to the 'Meats' section of the H.E.B. proudly displays fish and shellfish from all parts of the world: Chile, Alaska, China, Canada, and even our own Gulf of Mexico. Facing this apparent abundance and diversity of fish is misleading. Our oceans are in despair! Many popular fish have life histories that cannot compete with the efficiency of our fishing techniques (that is, the fish take years to reach sexual maturity, and are often caught before they have the opportunity to spawn). In addition, many fishing methods are disastrous to the environment (Caribbean Spiny lobsters are often caught using household bleach to stun them out of their hiding



places, long-line fishing catches sea turtles and other non-target species, and trawling for shrimp may yield more by-catch than shrimp). It is our job as responsible citizens to know what we eat, where it comes from, and the potential impact we could be making. Please visit <http://www.oceansalive.org/> and further explore eco-friendly fish, but as an appetizer, the list below offers some good and bad choices.

While the situation may seem dire, all is not lost. I love many of the "Worst Choice" fish, but many have "Best Choice" alternatives that are equally tasty and nutritious. Plus a clear conscience is proven to prevent indigestion. Don't be afraid to ask your waiter or fishmonger questions regarding how, and where your seafood was caught, it is your right to know! You may be surprised with how much help they can offer on the subject. If you're interested in more information regarding the status of our fisheries, and which fish to purchase, check out "Ocean Bankruptcy: World Fisheries on the Brink of Disaster" by Steven Sloan (usually found at Half-Priced Books), "Bottomfeeder: How to Eat Ethically in a World of Vanishing

BEST CHOICES

Mussels
Catfish (U.S.)
Stone Crab
Pacific Halibut (U.S.)
Spot Prawn (Canada)
Wild Salmon (Alaska)
Tilapia (U.S.)
Yellowfin Tuna (Pole, trawl caught)

WORST CHOICES

Anything long-line caught, or from China
Grouper
Atlantic Halibut
Orange Roughy
Atlantic/ farmed Salmon
Shark
Bluefin Tuna
Red Snapper

TV BIRDING SERIES

By Linda Fuiman, Outreach Chair

If you haven't already done so you might want to tune in to the latest bird watching segment on KIII TV, Channel 3, "South Texas Birding".

In the Spring of 2008, Corpus Christi received the title "Birdiest City" for a sixth year and when news director, Richard Longoria, KIII TV, looked around he didn't see anything promoting this title. So he came up with the idea of having a birding segment on television designed to promote birding within the Coastal Bend. Longoria said, "I can't believe that we have all these beautiful birds right here on our doorstep and not many people are aware of it." The series evolved and premiered on July 12, 2008 and it's goal is to bring an awareness to the general public of some of the fascinating birds we have right here in our own backyard.

Each week a bird topic is selected for discussion during the segment, which also includes bird images and/or video. The wrap-up of the segment introduces the "Bird of the Week" where viewers are given some information about the bird and locations as to where they might find it. If viewers take a picture of the bird Channel 3 will post it on their website.

South Texas Birding is aired each Saturday morning during the Weekend Edition news hour from 7:00 a.m. – 8:00 a.m. Our 3 minute South Texas Birding segment is usually aired between 7:15 a.m. and 7:30 a.m. To learn more go to: www.kiitv.com and click on South Texas Birding. Among the distinguished guests that have appeared with me to date are: Larry Jordan, David Newstead, Beau Hardegree, Scott Holt, and in the next couple of weeks Dane Ferrell and Tony Amos. My special thanks go to Tony Baylis for his breath-taking bird pictures and Liz Smith for her award winning video on coastal birds. I believe this is a worthwhile effort to promote birding in our area and if anyone is interested in participating in this please get in touch with me at Linda.fuiman@mail.utexas.edu.



It was a fun day for 25 South Texas Council-Boy Scouts of America when they recently attended a Webelos Day Camp at the Corpus Christi Museum of Science and History. The theme was *Scouting and the Oceans*. Linda Fuiman gave a presentation to the scouts on Coastal Birds and Conservation where the scouts learned the importance of maintaining healthy habitats.

CBAS TREASURER'S REPORT

June 1 - July 31, 2008

Beginning balance	\$14,096.36
Income	\$1,798.75
Expenses	<u>1,579.71</u> <u>219.04</u>
Ending balance	14,315.40
Less reserved fund	1,590.00
Less website development grant	500.00
Less sanctuary improvement donation ...	2,000.00
Operating fund	\$10,425.40

SANCTUARY NEWS (CONT)

(Continued from page 1)

battle with guineagrass, was partially funded by Supplemental Environmental Project (SEP) funds administered through Texas Commission on Environmental Quality (TCEQ), and also by a great partnership with Ducks Unlimited, Texas Parks and Wildlife Department, Natural Resource Conservation Service, and US Fish & Wildlife Service. To learn more about Texas Prairie Wetlands Project, visit <http://southern.ducks.org/Txprairiewetlands.php>.

On Sat. Aug. 9, Dick Dubois & David Newstead visited the sanctuary armed with our new trailer-mounted sprayer. Recent rains have put the guineagrass into growth overdrive. Due to the size and range of the new sprayer, we were able to treat "every last blade of guineagrass" on the property! Some areas had vigorous recent growth of guineagrass, but overall it

is clear that significant progress has been made. It is an ongoing management issue. Native grass seed for replanting the levees has been purchased and we are waiting for fall to plant, with help from the Kika De La Garza Plant Materials Center in Kingsville.

More good news for the sanctuary arrived recently. Another \$2,457 in SEP funds was awarded to CBAS for habitat work at the North Bay Sanctuary. These funds can go a LONG WAY to making substantial improvements for wildlife when coupled with the willingness and enthusiasm of some hard-working volunteers. If you're looking for a way to get involved, and don't mind a little sweat, your volunteerism would be much appreciated. Please contact Dick Dubois, Sanctuary Manager, at papadubois@yahoo.com to learn about how you can help make the sanctuary a better place for wildlife.

MEMBERSHIP

Name: _____ Address: _____

City: _____ State: _____ Zip Code: _____

Phone: _____ E-mail: _____

Indicate membership preference:

_____ I would like to become a member of: **National Audubon Society (NAS) AND Coastal Bend Audubon Society** (local W-13). Your membership includes the National Audubon Magazine, chapter membership, and other benefits. Your chapter receives part of your dues. Introductory /1 year \$20. **Make check to National Audubon Society, and mail to National Audubon Society, Membership Data Center, P.O. Box 52529, Boulder, CO 80322**

_____ I would like to become a member of: **Coastal Bend Audubon (local W-13) ONLY**. No NAS membership and no Audubon Magazine subscription. Your chapter only membership includes all other Audubon membership benefits. Your chapter receives all of your dues. Introductory /1 year \$15. Make check to Coastal Bend Audubon Society.

_____ I would like to become a **CONTRIBUTING MEMBER**. Your Contributing Membership includes membership to the National Audubon Society, subscription to the Audubon Magazine, chapter membership, and other benefits. You may designate preferred level and category of support: _____ Tern/1 year \$ 50, _____ Osprey/1 year \$100, _____ Pelican/1 year \$500

Amount Enclosed: \$ _____ **Date** _____

Please consider making a tax deductible contribution to the local chapter, the Coastal Bend Audubon Society. You may designate the category you would like your contribution applied to (**please circle one**): 1. General Fund - to be used as needed, 2. Education Program, 3. Sanctuary Maintenance, 4. Newsletter Fund.

To join or to contribute, please send this completed form and payment to:
COASTAL BEND AUDUBON, P.O. Box 3604, Corpus Christi, TX 78463

The Newsletter of the Coastal Bend Audubon Society

P.O. Box 3604
Corpus Christi, Texas 78463

Phone: 361-885-6203
Email: davnewst@yahoo.com
Website: <http://www.ccbirding.com/cbas/>

Non-Profit Org.
U. S. Postage

PAID

Permit No. 1080
Corpus Christi, TX

Regular CBAS meetings:
First Tuesday of the month, September through May, 7 p.m. at the CC Museum of Science and History



The Brown Pelican

Coastal Bend Audubon Society Board of Directors

PRESIDENT
David Newstead
361-885-6203
davnewst@yahoo.com
VICE PRESIDENT
Mary Ellen Vega
txvega@aol.com
SECRETARY
Cherie McCoullough
cherie.mccoullough@tamucc.edu
TREASURER
Leatrice Koch
leak36@aol.com

The Coastal Bend Audubon Society is a non-profit 501c(3) organization dedicated to the conservation of birds, and bird habitat, and to conservation education in the Coastal Bend.

The organization is supported by contributions from local memberships and from the National Audubon Society.

Your CHAPTER needs you! You can help steer the course of growth and change in our community by working together Please contact us at 361-885-6203 about getting involved!

DIRECTORS

Education Linda Fuiman, Linda.Fuiman@mail.utexas.edu

Sanctuary Dick DuBois, papadubois@yahoo.com

Conservation Scott Large, largesi@gmail.com

Membership Laura Cooper, lgcooper@earthlink.net

Newsletter Sally Bickley, s8bickley@yahoo.com

At-Large Gene Blacklock, geneb@cbbep.org

At-Large Ray Sutton, wsutton1@stx.rr.com

This newsletter is compiled/written and published every other month. Articles of interest are gathered from various sources and compiled by the editor, volunteers, and/or contributing authors. All contributions and comments are welcomed.

